

# 18NHG34-F

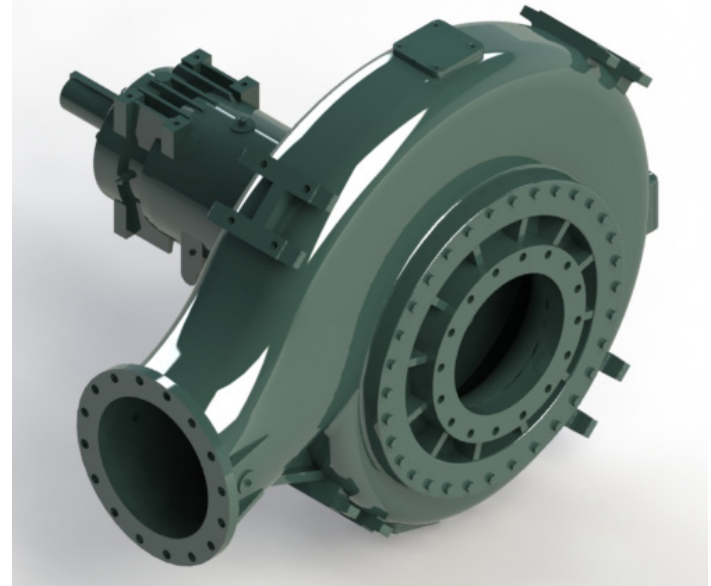


## AVAILABLE MOUNTING CONFIGURATIONS

18NHG34-F FRAME MOUNT  
 18NHG34-RP-F RED-PRIME FRAME MOUNT  
 18NHG34-VF VERTICAL MOUNT

## OPERATING LEVELS

<b>MIN FLOW</b>	4000 GPM	908 m <sup>3</sup> /h
<b>MAX FLOW</b>	24000 GPM	5450 m <sup>3</sup> /h
<b>DISCHARGE SIZE</b>	18"	457.2 mm
<b>SUCTION SIZE</b>	18"	457.2 mm
<b>SOLIDS HANDLING</b>	4.5"	114 mm
<b>MAX SPEED</b>	900 RPM	900 RPM
<b>SHUT-OFF HEAD</b>	320'	98 m
<b>BEP HEAD</b>	220'	67 m
<b>BEP FLOW</b>	16820 GPM	3820 m <sup>3</sup> /h
<b>BEP PERCENT</b>	85%	85%



A typical picture of the pump is shown. Please contact Cornell Pump Company for further details. All information is approximate and for general guidance only.

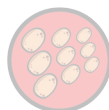
The 18NHG34 pump is designed with Cornell's renowned quality and durability. It features an 18" discharge, 18" suction, double volute, and enclosed impeller. Cornell's patented Cycloseal® design is standard, with a Type 2 single mechanical seal with Buna-N elastomers, stainless steel hardware and tungsten carbide vs. silicon carbide seal faces for abrasion resistance.

- Robust solids handling capability
- Premium hydraulic efficiency
- Cycloseal® design mechanical seal
- Heavy-duty construction
- RunDry™ option
- Redi-Prime® fully automatic self-priming; dry-priming available
- Double volute

PARTS	STANDARD MATERIAL (ALL IRON)
<b>WEAR RING</b>	CAST IRON
<b>IMPELLER</b>	DUCTILE IRON
<b>VOLUTE</b>	DUCTILE IRON
<b>VOLUTE CASING</b>	DUCTILE IRON
<b>SHAFT</b>	17-4PH STEEL
<b>SHAFT SLEEVE</b>	416SS STAINLESS STEEL
<b>SUCTION COVER</b>	DUCTILE IRON
<b>MECHANICAL SEAL</b>	TUNGSTEN CARBIDE VS. SILICON CARBIDE
<b>BEARING HOUSING</b>	CAST IRON
<b>BEARING FRAME</b>	CAST IRON
<b>FRAME</b>	CAST IRON



AGRICULTURE



FOOD



INDUSTRIAL



MINING



MUNICIPAL



OIL & GAS



REFRIGERATION



RENTAL

# 18NHG34-F

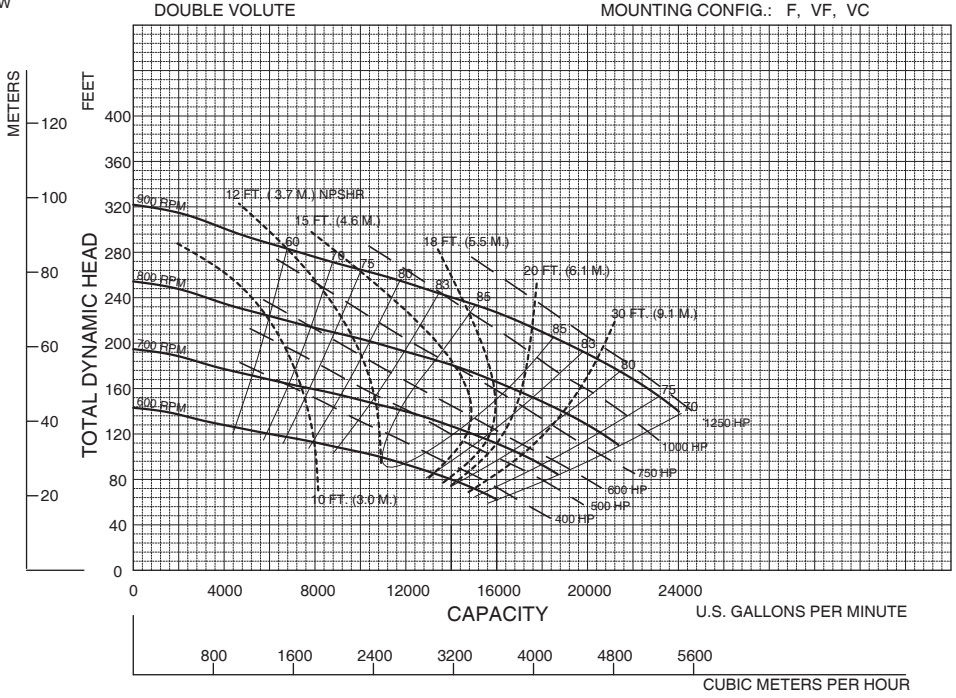


Feet x .305 = Meters  
 Inches x 25.4 = Millimeters  
 GPM x .227 = Cubic Meters/Hour  
 GPM x 3.785 = Liters/Minute  
 HP x .746 = KW

Speed	Impeller Dia.	Style	Solids Dia.	N <sub>S</sub>	Suction	Discharge	No. vanes
VARIOUS	34.00"	ENCLOSED	4.5"	2030	18"	18"	3

NEW PAGE

Performances shown are for cool water, horizontal frame configuration with packing. Consider horsepower and/or performance adjustments.



18NHG34VA

Cornell Pump Company • Portland, Oregon 18NHG34 - VARIOUS RPM 09/18/03

